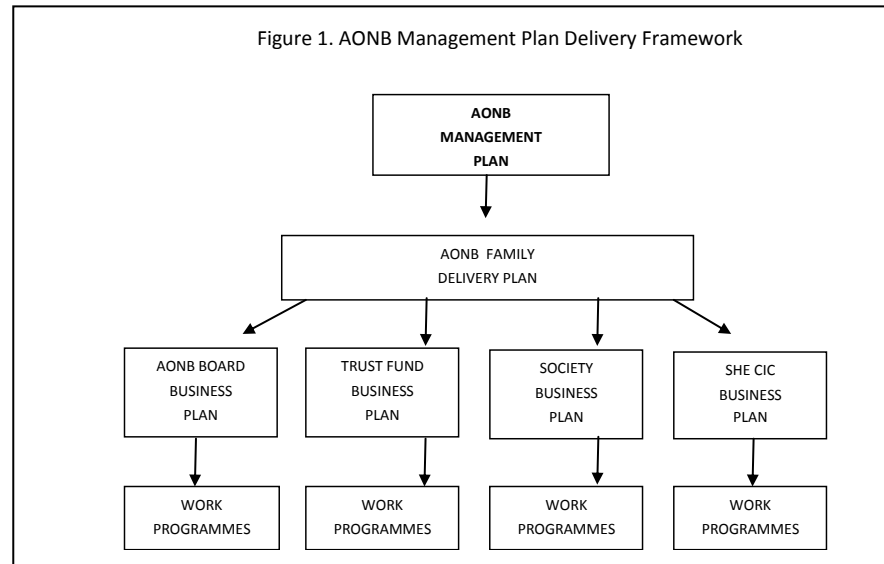


## **SURREY HILLS AONB MANAGEMENT PLAN (2014 -2019) DRAFT FAMILY DELIVERY PLAN – WORKING DOCUMENT**

Although the fundamental purpose of the Management Plan will be to encourage co-ordinated action by all organisations, agencies and individuals, the Surrey Hills AONB Board has established a Surrey Hills group of organisations (the Surrey Hills Family) to help support the delivery of the AONB Management Plan. This will be achieved through growing the membership and activity of the Society; growing the business sector’s involvement and revenue streams through Surrey Hills Enterprises; and generating income through the Surrey Hills Trust Fund in support of the implementation of the AONB Management Plan. The driver has been the recognition that Government funding is heavily constrained, so working collaboratively through the family provides an opportunity to diversify and broaden the resource base, including access to skills, funding and volunteering.

The Surrey Hills Family Delivery Plan details how the targets will be delivered under the following Surrey Hills AONB Management Plan headings:

- Landscape Conservation and Enhancement
- Enjoyment and Understanding
- Growing the Surrey Hills Economy
- Partnership and Coordination



The Family Delivery Plan will be monitored through quarterly meetings of the Surrey Hills AONB Board and annual meetings of the Surrey Hills Partnership Forum. A formal review of the Delivery Plan will inform the preparation of a new AONB Management Plan (2019 – 2024)

**SURREY HILLS AONB MANAGEMENT PLAN - FAMILY DELIVERY PLAN 2014 – 2019**

**LANDSCAPE CONSERVATION AND ENHANCEMENT**

<b>Mgt Plan Ref.</b>	<b>Project And AONB Policy Framework</b>	<b>Activity</b>	<b>TARGET</b>	<b>TIME-SCALE</b>	<b>LEAD</b>	<b>PARTNERS</b>	<b>WHAT HAS BEEN ACHIEVED COMMENTS</b>	<b>RED AMBER GREEN</b>
L1	AONB Boundary Review  Land use planning	Support Natural England in the process of the AONB Boundary Review	Modification Order	2018	Natural England	Local Authorities		
L2	Living Landscapes  Farming, Biodiversity Woodlands	More, bigger and less fragmented areas for wildlife	No net loss of priority habitat and an increase in the overall extent of priority habitats	2014 – 2019	SNP, SCREF	SHE, SWT, CLA, NFU, local authorities		
L3	Enhanced wildlife habitats  Biodiversity	priority habitats in favourable or recovering condition  SSSIs in favourable or recovering condition	90% of habitats  95% of SSSIs	By 2019	SNP, SCC, SCREF	SHE, SWT, CLA, NFU, local authorities		
L4 Planni ng	Planning advice	Influence planning policy and decisions by advising on the preparation of Local Plans and major developments affecting the AONB	100 consultation response per annum and appraise impact	2014 – 2019	AONB Board	Local authorities, CPRE, parish councils		

L5	Planning advocacy  Land Use Planning	Raise awareness among the public and relevant bodies of the pressures on the Surrey Hills and the need for tight controls on development through regular reports, including features in the Surrey Hills newsletter	2 Features per annum and PR	2014 - 2019	AONB Board, Surrey Hills Society	Local authorities, CPRE, parish councils		
L6	Cycling  Recreation and Tourism	Develop and deliver a mountain bike and cycling strategy for the Surrey Hills as part of the Surrey Cycling Strategy.	Development Plan	By 2015	AONB Board/SCC	Local authorities, CTC, CLA, LEADER		
L7	Woodland Advice  Woodland	Continue to lead on promoting woodland management by delivering advice and support to owners	Advice to 50 owners per annum	2014 - 2019	Surrey Hills Enterprises	FC, SCC, LEADER		
LC8	Tillingbourne Valley  Historic and Cultural Heritage	Develop and implement projects for Tales and Trails of the Tillingbourne Valley for submission of Heritage Lottery bid	Submit bid	in 2014	AONB Board	Parish councils, Guildford BC, Mole Valley DC, SWT, EA, SCC		
LC9	Overhead lines  Land Use Planning	Reduce impact of overhead power lines in the Surrey Hills by implementing schemes with SSE and UK Power Networks	2 schemes per annum	2014 - 2019	AONB Board	SSE UK Power Networks		
L10	Rural Traffic Management  Transport and Traffic	Implement proposals for communities that promote and reinforce the rural character of the Surrey Hills country lanes and villages	2 communities per annum	2014 - 2019	Surrey County Council/ AONB Board	Parish councils		

## ENJOYMENT AND UNDERSTANDING

<b>Mgt Plan Ref</b>	<b>PROJECT And AONB Policy Framework</b>	<b>ACTIVITY</b>	<b>TARGET</b>	<b>TIME-SCALE</b>	<b>LEAD</b>	<b>PARTNERS</b>	<b>WHAT HAS BEEN ACHIEVED</b>	<b>RED AMBER GREEN</b>
E1	Inspiring Views  Recreation and Tourism, Historic and Cultural Heritage	Develop and implement an Inspiring Views programme to open up and maintain important views to and from the AONB	Up to 4 important views per annum	2014 - 2019	Surrey Hills Society	Surrey Hills Trust Fund, AONB Board, CLA, PCs, NDW, CPRE		
E2	Surrey Hills Society  Recreation and Tourism; Community Development and Local Economy	Increase the membership, profile, events programmes and volunteering opportunities through the Surrey Hills Society	2000 members	By 2019	Surrey Hills Society	Parish councils		
E3	North Downs Way  Recreation and Tourism	Secure government funding arrangements for the North Downs Way National Trail	Partnership Agreement	By 2015	NDW Trail Partnership	AONB Board, NE, SCC, KCC		
E4	Frontline Surrey Hills  Historic and Cultural	Deliver the Frontline Surrey Hills HLF funded military heritage project and seek to extend across the Surrey Hills	HLF bid additional bid	By 2015	AONB Board	NT, Gatton Trust, Surrey Heritage		

	Heritage							
E5	Ride London Surrey  Recreation and Tourism	Support annual Prudential Ride London event as an opportunity to promote the Surrey Hills Trust Fund and local food, drink and cycle businesses	Annual Festival and number of businesses engaged	2014 - 2019	Prudential Ride London	SCC, local authorities		
E6	Surrey Hills Arts  Recreation and Tourism; Historic and Cultural Heritage; Community Development and Local Economy	Inspire and engage new audiences through a Surrey Hills Arts programme with an agreed development plan	Development Plan	By 2015	County Arts	AONB Board		

## GROWING THE SURREY HILLS ECONOMY

Mgt Plan Ref	PROJECT	ACTIVITY	TARGET	TIME-SCALE	LEAD	PARTNERS	WHAT HAS BEEN ACHIEVED COMMENTS	RED AMBER GREEN
G1	Surrey Hills Enterprises  Community Development and Local Economy	Support the development of Surrey Hills Enterprises CIC to grow its membership and income towards the AONB Management Plan	Membership to 250  Income to £60k	By 2019	SHE CIC	AONB Board, SCC, SCREF, LEPs, Surrey Connects		
G2	LEADER  Community Development and Local Economy; Farming;; Recreation and Tourism	Help secure the continuation of a Surrey Rural Leader programme to benefit the economy of rural Surrey	60 new projects benefitting the Surrey Hills area	By 2019	Local Action Group	SCC, SCREF, NFU, CLA, FC		
G3	Wood Hubs  Woodland	Develop Interreg Wood Hubs programme with international partners	Interreg bid	By 2016	SHE CIC	SCC, FC, LEPs, CLA, SCREF		
G4	Wood Fuel Conference  Woodland	Hold an annual Wood Fuel Conference and establish as a key national event	Annual event	2014 - 2019	SHE CIC	FC, Grown in Britain, LEPs, SCC		
G5	Surrey Hills Wood Fair  Woodland; Community Development	Grow the Surrey Hills Wood Fair event	Over 5000 visitors per annum	2014 - 2019	SHE CIC	SCREF, Society, FC, SCC		

	and Local Economy; Recreation and Tourism							
G6	Our Land  Recreation and Tourism Community Development and Local Economy;	Support the roll-out of the Our Land – Experiences to Treasure tourism programme and secure sustainable business model	New business model	By 2016	Rt.com	Protected landscapes, AONB Unit		
G7	Tourism  Recreation and Tourism Community Development and Local Economy;	Maximise the benefits of rural tourism in partnership, including Visit Surrey and Our Land, with new collaborative website	New Surrey website	2015	Visit Surrey	SCREF, SHE CIC, tourism businesses, LEPs		
G8	Surrey Hills Festivals  Community Development and Local Economy; Recreation and Tourism; Cultural and Historic Heritage	Develop and deliver a Food and Drink, and Walking Festival	10% increase in visitors each year	2014 - 2019	SHE CIC	LAG, Visit Surrey, local authorities		
G9	Local Enterprise Partnerships  Community	Develop relationship and investment opportunities through the Local Enterprise Partnerships Coast to Capital and Enterprise	Secure over £2m investment in Surrey Hills area	by 2019	SCREF, AONB Board	Local authorities, SHE CIC, Surrey Connects,		

	Development and Local Economy; Recreation and Tourism; Land Use Planning	M3				Protected Landscapes		
--	--	----	--	--	--	----------------------	--	--

## PARTNERSHIP AND COORDINATION

Mgt Plan ref	PROJECT	ACTIVITY	TARGET	TIME-SCALE	LEAD	PARTNERS	WHAT HAS BEEN ACHIEVED	RED AMBER GREEN
P1	AONB Management Plan	Ensure sound governance, reporting and monitoring of the AONB Management Plan through quarterly meetings of the Surrey Hills AONB Board	90% attendance at AONB Board meetings	2014 - 2019	AONB Board	AONB partnership		
P2	Surrey Hills Trust Fund	Establish a Surrey Hills Trust Fund with the Community Foundation for Surrey	£100k through flow project funding per annum and £1m endowment	By 2019	Fund Panel	Community Foundation for Surrey, AONB Board		
P3	Surrey Hills Partnership	Establish the annual Surrey Hills Partnership as an opportunity to oversee and scrutinise the work of the Surrey Hills family	Annual tour Annual Partnership meeting	2014 - 2019	AONB Board	Partnership		
P4	Governance	Establish a revised constitution for the Surrey Hills AONB Board and secure funding support from	New Constitution	By 2019	AONB Board	Partnership, Defra		



		Defra and local authority partners						
P5	AONB Management Plan (2019 – 2024)	Review the AONB Management Plan and deliver a new Management Plan for adoption	Adopted AONB Management Plan	Adopted by 2019	AONB Board	Partnership, Defra, NE, local authorities		
P6	Policy Development	Develop policy and strategy with central and local government through active membership of the NAAONB, attending Conference and AGM	Attend NAAONB Conference and AGM	2014 - 2019	AONB Board	Partnership		
P7	NAAONB	Second the Regional Coordinator to the National Association of AONBs as its Development Manager	Seek sustainable arrangement	By 2017	AONB Board	NAAONB, Defra		
P8	Monitoring	Establish a methodology and a baseline to monitor landscape change to help identify the types of change taking place and how these are affecting the landscape character and natural beauty of the Surrey Hills AONB	State of AONB Report	By 2019	Officers Working Group	NE, Protected Landscapes, NAAONB		